

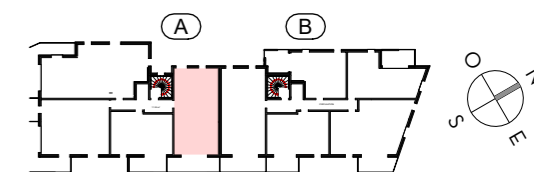
L'ÉVEIL

Vivre dans un parc, habiter la ville

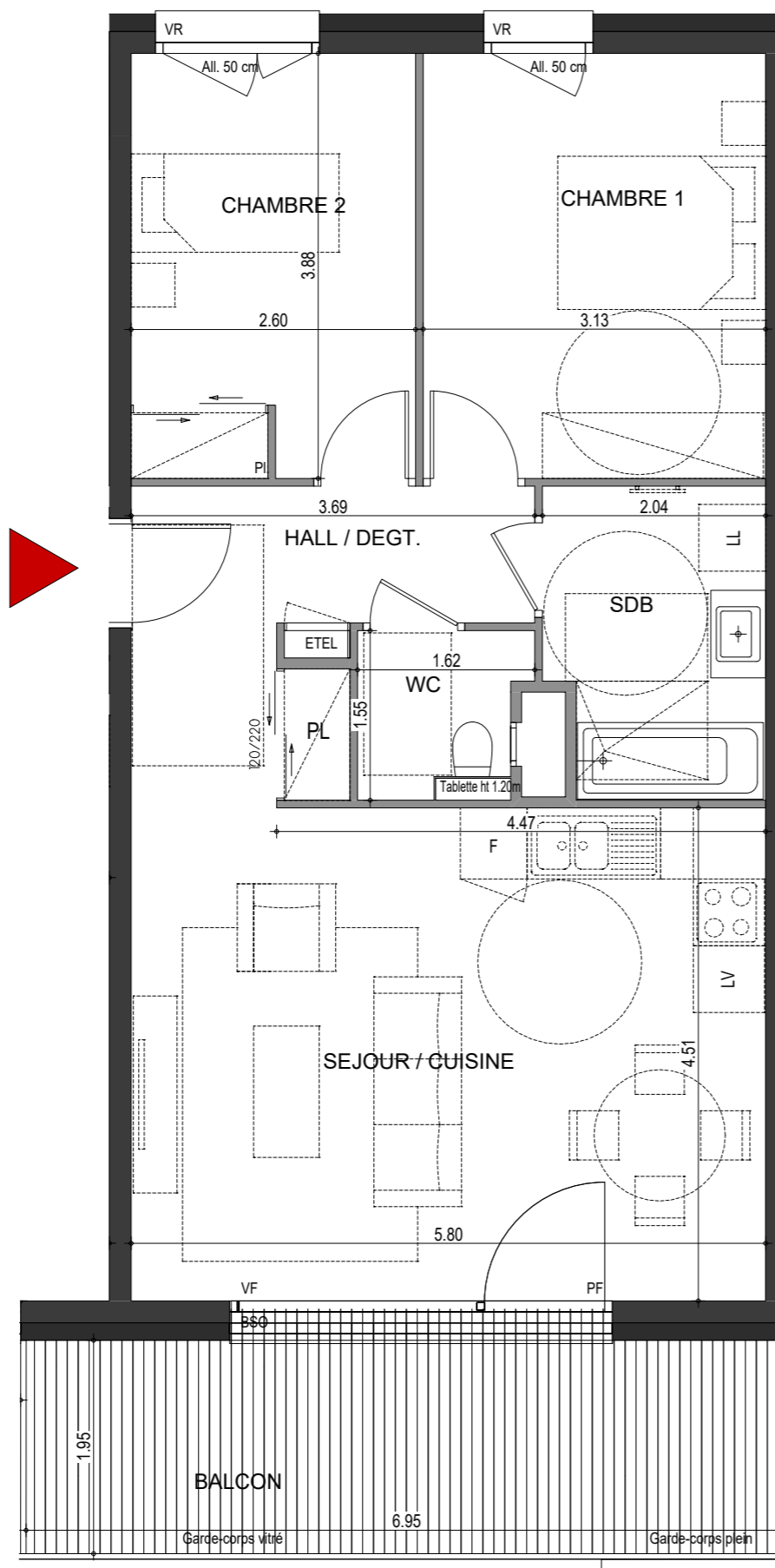
OSTARA

**PLAN DE
PRE-COMMERCIALISATION**

RUE DES CARILLONS
74940 ANNECY



A41



**3 PIECES
HALL A - A41 - R+4**

HALL / DEGT.	7.66 m ²
SEJOUR / CUISINE	26.13 m ²
CHAMBRE 1	12.16 m ²
CHAMBRE 2	10.05 m ²
SDB	5.52 m ²
WC	2.12 m ²
SURFACE TOTALE HABITABLE	63.64 m²
BALCON	13.56 m ²
SURFACE TOTALE PRIVATIVE	77.20 m²